



SEWF
POLICY FORUM

21 May 2025

EVENT REPORT



SOCIAL
ENTERPRISE
**WORLD
FORUM**



Taipei

SEWF Policy Forum overview

On 21 May 2025, the SEWF Policy Forum, co-hosted with [Impact Hub Taipei](#), connected over 760 participants from 93 countries, featuring eight sessions and 13 expert speakers. The Forum featured diverse perspectives from changemakers, policymakers and social enterprises exploring how progressive policy can — and already does — unlock the potential of social enterprises to build inclusive and resilient economies for people and planet.

From Bhutan's Gross National Happiness framework to youth empowerment, rural social enterprise development and data harmonisation, discussions highlighted how social enterprise can be a driving force in community development and national economic strategies. The event spotlighted Asia-Pacific policy leadership with examples from across the region, including Taiwan, Japan, Thailand, Malaysia and Australia.

The Forum concluded with an optimistic call to treat these challenging times as an opportunity: to collaborate and learn from what works and adapt it to local contexts while also connecting global efforts to redefine enterprise and increase impact.

SEWF Policy Forum in numbers:



760+ registrations



90+ countries



13 speakers



8 sessions



“What I’m optimistic about is where social enterprise is right now. Enterprise and social seems to be a subset, right? We’re a sliver of the enterprise space and what I’m optimistic about is that that will no longer be possible beyond 2030. Social enterprise is enterprise and I think these are the disruptions we’re seeing today...That there’s a potential for us to create a real movement to not be a sub sector or a clean-up sector while there is a much larger mess-up sector. How do we change the idea of what enterprise should be? I think that’s the bigger opportunity, a mission.”

– **Gaurav Gupta**, [Dalberg Advisors](#) (Singapore)

Top countries by registration:

United Kingdom



Australia



Malaysia



Taiwan



Canada



Nigeria



SEWF Policy Forum in words

Key takeaways



Innovative policy action across the Asia-Pacific region:

Many governments across the Asia-Pacific region are increasingly recognising the power of the social enterprise movement and embedding it into national strategies through legislation, cross-sector partnerships and funding.



Social enterprise as mainstream enterprise:

Social enterprise should be recognised not as a sub-sector but as a standard for business centred on mission and impact. We need to work towards redefining enterprise to prioritise people and planet.



Powering local action with global insight:

International learning must support place-based solutions through a “vocal for local” approach that prioritises local leadership and context-driven action.



Policy shaped by lived experience:

Effective policy must be informed by lived experience, community leadership and data rooted in local realities.



Multi-sector collaboration:

Governments, social enterprises, investors and communities must work together to build supportive ecosystems that foster innovation and scale impact.



Youth and Indigenous leadership:

Youth empowerment and Indigenous and local self-determination are vital to inclusive policymaking and sustainable development.



Flexible and adaptive policy:

Responsive and decentralised policy is essential to support grassroots innovation and scalable impact.



Valuing social impact:

Policy must recognise the broader value social enterprises create, not solely focus on financial returns.

[Learn more](#)



Speaker call to actions

"It's just monumentally exciting to see what can happen when we bring the right players together —government, philanthropy and social impact investment. I think we're still in the early days in Australia, but the more we do this around the world, the greater our chances of scaling wonderful social enterprises. And we need them now more than ever."

– Cindy Carpenter, The Bread & Butter Project (Australia)

"I think we should also focus on creating economic sustainability, which requires having a competitive advantage or a strong core value just like any other business. So don't run away from social impact, but face the reality and aim to achieve both economic sustainability and social impact."

– Yoshitaka Tabuchi, Zebras and Company Inc.(Japan)

"Since business as usual isn't working, I think social enterprises are in a better position to actually promote innovation and social innovation and as it has been pointed out, we are in a better position to respond to grassroots' issues despite the global disruption."

– Marie Lisa Dacanay, Institute for Social Entrepreneurship in Asia (ISEA) (Philippines)

"We recognise that the government has a role here but we're not doing it alone... Community, business, social enterprise, investors, philanthropy, faith-based organisations - everyone is part of the ecosystem."

– Sarah Haigh, Office of Social Impact, Queensland Treasury (Australia)

"Uncertainty causes challenges but also new opportunities (...) time to regenerate and rethink business."

– Ting-Yueh (Eva) Kang, Taiwan Institute of Economic Research (Taiwan)

"With everything going on in the world right now, my mantra would be 'vocal for local'. So, use global insights but power local action."

– Sreevas Sahasranamam, Adam Smith Business School University of Glasgow (UK)

Policy resources

Looking for materials? Visit SEWF's Resource Library for inspiration.

[Explore](#) →

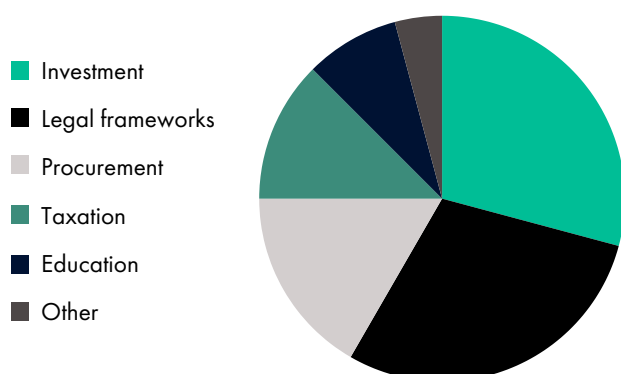


Here's what participants talked about:

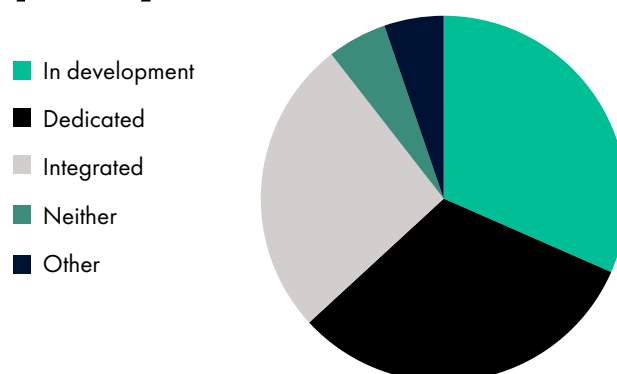
SEWF Policy Forum word cloud

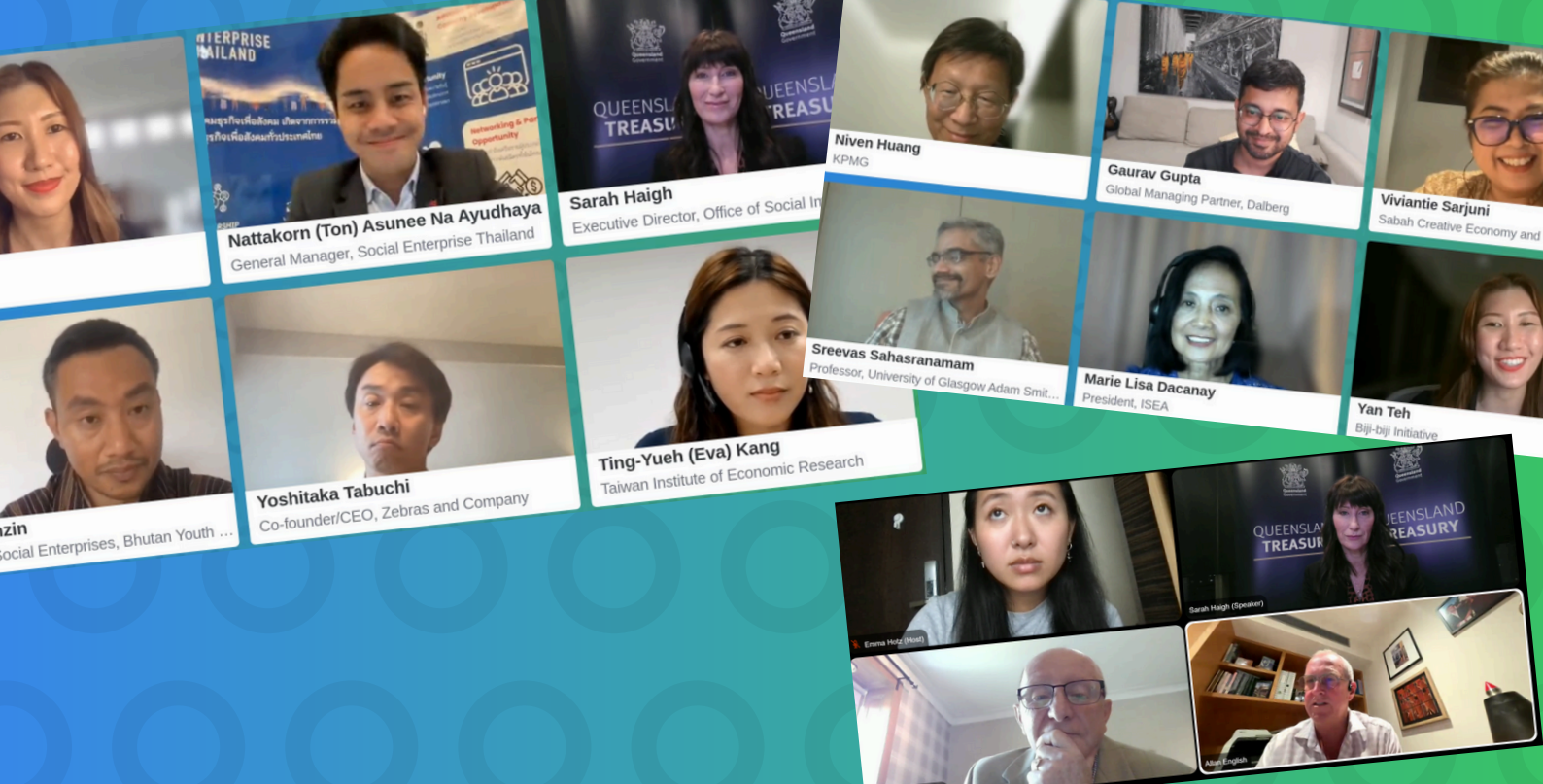


How can policymakers best support social enterprises?



In your country, is there a dedicated social enterprise policy?





Policy Forum sessions now available on the SEWF video library

Explore the SEWF Policy Forum in the SEWF Video Library, now featuring all sessions from the event:

- Social enterprise and policy innovation: Spotlight on the Asia-Pacific region
- Beyond borders: Strengthening social enterprise through regional and global collaboration
- From policy to effective implementation and action
- Funding and finance - addressing barriers to access
- Informing policy through data
- Unlocking social investment for greater impact

The SEWF Video Library is free to access. Sign-up required.

[Watch now](#)

Let's keep the conversation going

We look forward to continuing the conversation and learning together. Connect with the global SEWF Community online:



